


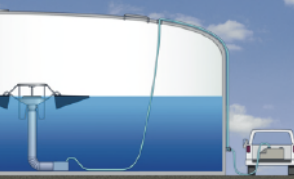
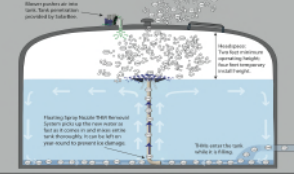

Budget Estimate for GS-12-120v Potable Tank Mixer - Last updated: Feb 1, 2013

Equipment Description	Purchase Cost Each
GS-12-120v mixer with 75' feet of submersible cable. FOB Factory (estimated UPS \$200).	\$7,800

Note: Please verify price before ordering. The GS-12 mixer performance is guaranteed. It is the most effective and competitive mixer on the market. Full specifications are available at medoraco.com. Upon request, independent Computational Fluid Dynamics modeling can be provided, supporting the flow rate of the mixer, with water of 1.0000 specific gravity, to be 38,000 gpm of upward flow in a 5MG tank of dimensions 145 ft diameter x 40.5 ft tall

Installation of this equipment is not complicated, and well within the scope of work most cities or contractors can perform. An installation manual is provided with all machines. Placement right under a hatch is usually fine, however if this a chloramine system with nitrification problems, then the unit should be placed at or near the lowest part of the tank floor.

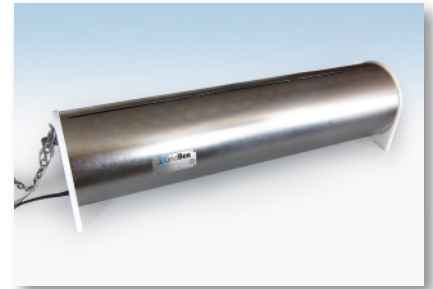
Optional Items

 <p align="center">GS-12 Control Box with SCADA Monitoring</p>	<p>Control Box: NEMA 4X enclosure, UL listed, HOA switch, contactor for mixer control, 15 Amp GFCI, run indicator light, grounding lug, 120 VAC male molded plug, and locking latch for security.</p> <p>SCADA: 4-20 mA current transducer providing analog output for motor current allowing for monitoring proper operation and 24 VDC relay to allow for remote on and off control of the mixer.</p>	<p align="center">\$950</p>
<p align="center">Chemical Injection Line Kit</p>	<p>75 ft Long x 1/2" ID injection hose kit, connects to fitting on intake of mixer and to top of tank, shipped loose with machine for customer / contractor installation.</p>	<p align="center">\$300</p>
<p align="center">GS-12 Extended Warranty</p>	<p>Optional 7-year factory warranty, in lieu of standard 2-year warranty. This is a full-replacement warranty on the mixer, control box, and wiring.</p>	<p align="center">\$1,200</p>
 <p align="center">Portable Disinfectant Boost System</p>	<p><i>Consider when occasional on-site boosting is desired.</i> Portable Disinfectant Boost System (designed to be installed in the back of a pickup), safe, durable chemical transfer system to boost disinfectant in potable water reservoirs. Boosting rate up to 4 gpm, one system can treat multiple tanks, approximate dimensions: 20" W x 52" L x 20" H. Air compressor (4 cfm @ 60 psi) is required to operate the air-powered diaphragm pump; air compressor not included. Brochure available upon request.</p>	<p align="center">\$6,300</p>
 <p align="center">THM Removal System</p>	<p>Effective and economical spray nozzle system that works in conjunction with a GridBee / SolarBee mixer to strip TTHM from potable water storage tanks and clearwells. For more information on the THM removal system, please contact us or visit MedoraCo.com.</p>	<p align="center">Call for pricing.</p>
 <p align="center">Factory Delivery and Placement</p>	<p>Includes delivery and placement of the above equipment into the tank, and supplying any crane or lifting assistance that may be needed. It also includes bringing the electric cord from the mixer to the outside of the tank via a through-wall fitting Medora will supply and install through a tank wall, roof, or vertical side of a raised hatch.</p>	<p align="center">\$3000 to \$15,000</p>

GridBee GS-12 submersible mixer thoroughly mixes potable water storage tanks of a wide size range - especially the bottom three feet, the most critical part of the tank. Economical to purchase and operate, the grid-powered GS-12 is easily installed by lowering through any 12" or larger tank hatch. There is no need to enter or drain the tank.

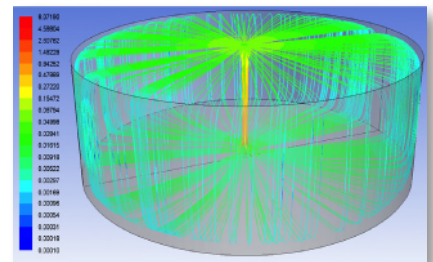
Features & benefits of the GS-12 submersible mixer:

- Eliminate ice damage to tanks in cold climates
- Provide uniform water age and disinfectant distribution
- Prevent stagnation, thermal stratification, and short-circuiting
- Reduce nitrification in chloraminated systems
- Use less disinfectant and produce fewer disinfection byproducts
- Impact the tank boundary layers where bacteria builds up
- Low power consumption
- Low-impact feet and endcaps will not damage interior tank coatings
- Certified to NSF / ANSI Std 61-G
- Optional NEMA 4X control box with SCADA monitoring
- Compatible with disinfectant boost and THM removal systems

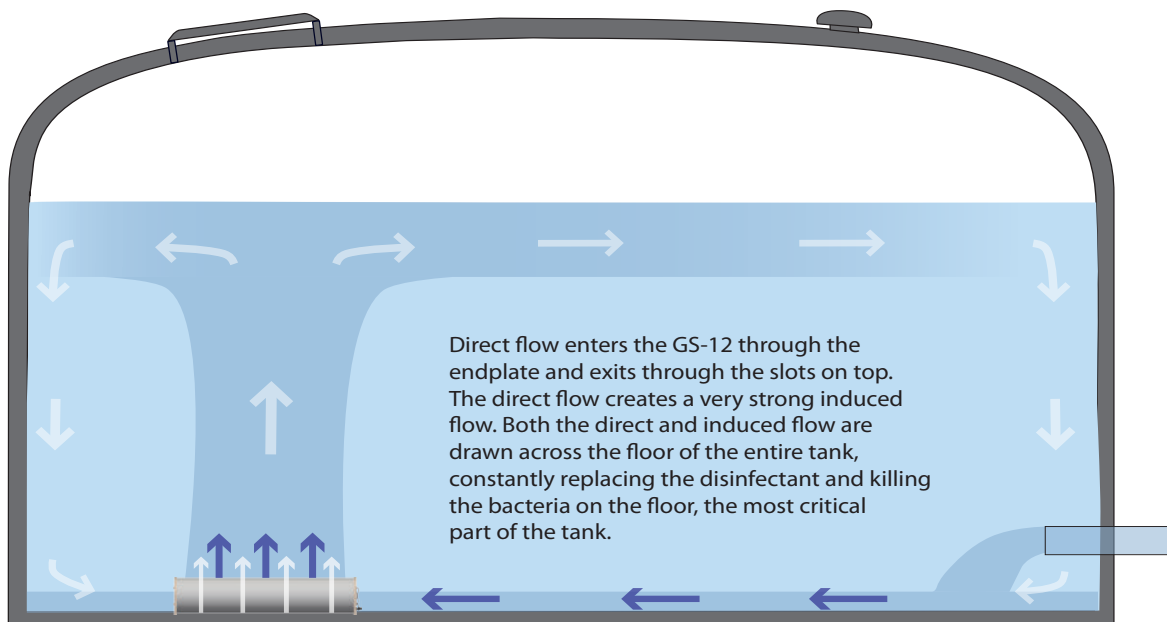


Specifications:

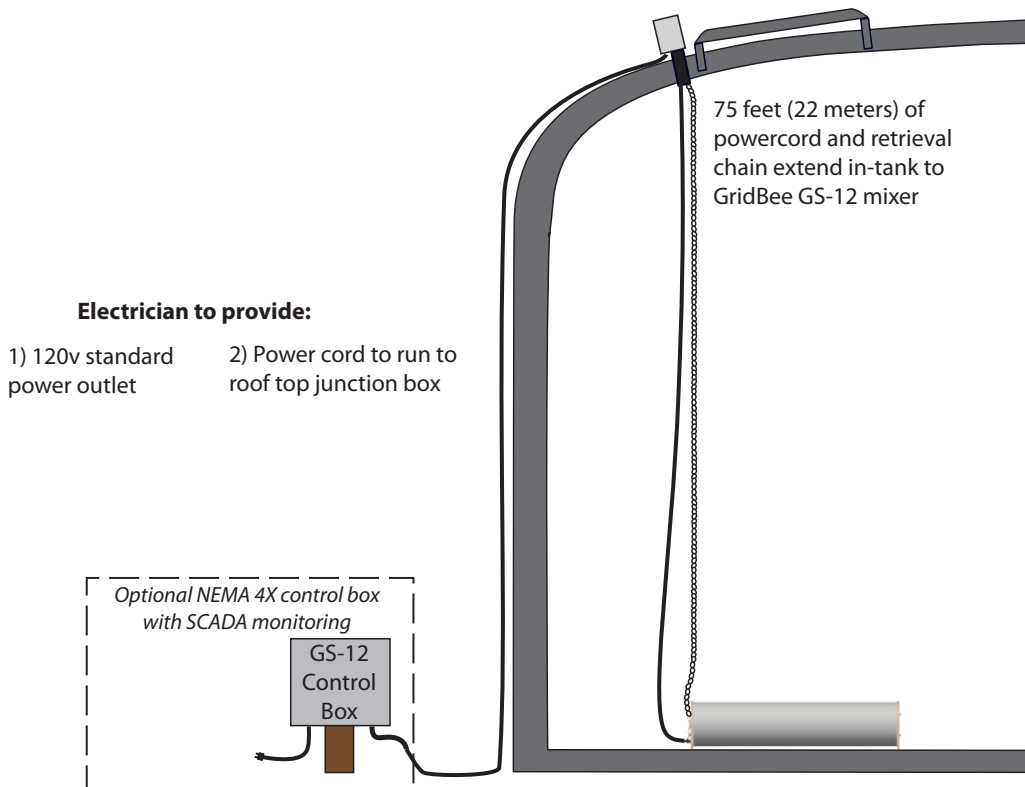
- Dimensions: 36 inches (92 cm) long, 11.5 inches (30 cm) diameter
- Weight: 70 pounds (32 kg); shipping weight 110 pounds (50 kg)
- 120v option draws 10 amps, requires 15 amp delay fuse or 20 amp standard fuse (48v and 240v options available)
- 2-year parts and labor warranty
- See reverse side for package contents



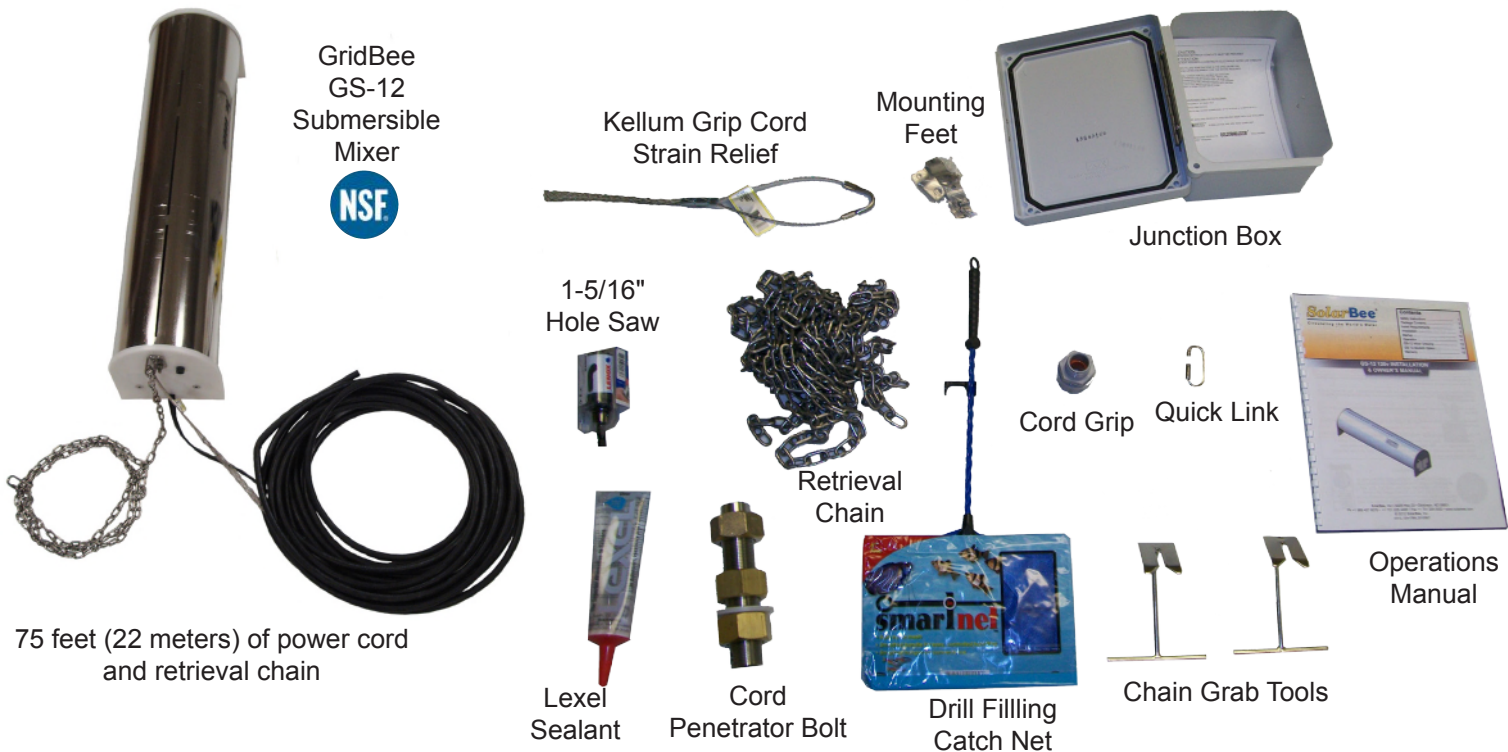
GS-12 in 5MG Reservoir



Installation Overview



Package Contents



SolarBee® and GridBee® are brands of Medora Corporation

Medora Corporation

3225 Hwy 22 • Dickinson, ND 58601
 Ph +1 866 437 8076 • www.medoraco.com
 GS12_20130206b • © 2013 Medora Corporation

Locally Represented By:

Ryan Process, Inc.
 Danville, CA
 925-837-0670